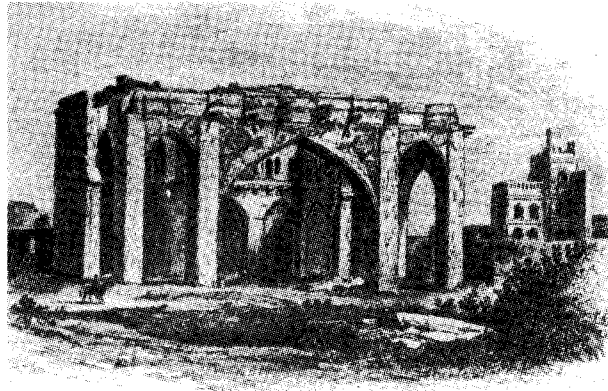


Illustrations



Thomas Biggs of Bombay Artillery appointed as Architectural photographer in 1855. He prepared over 100 photographs of Bijapur, Aihole, Badami and other sites for the first time in the photographic history of Karnataka. Later in 1866 these photographs were printed in a book form.

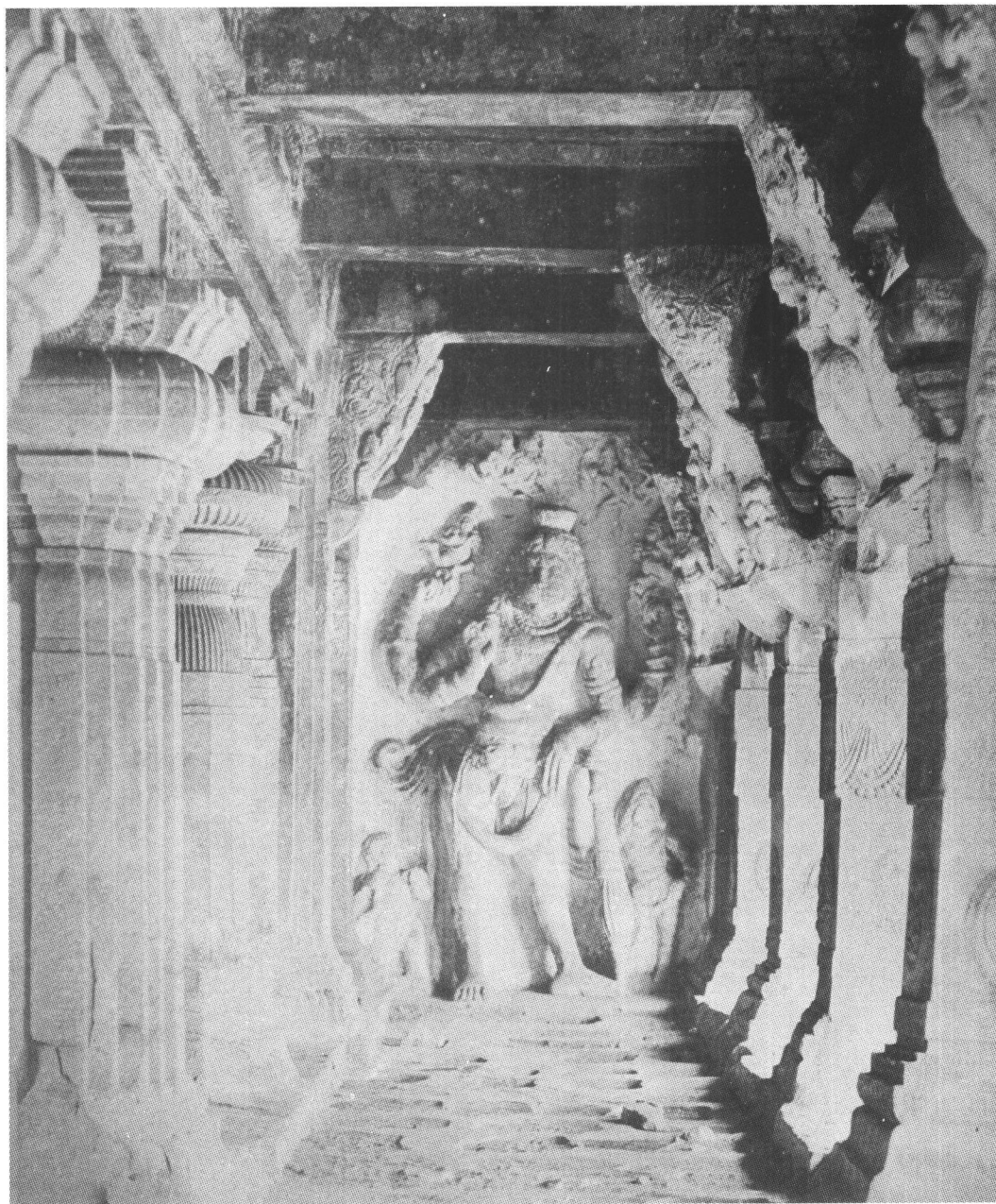
Almost the same time James Fergusson, captain Hart R.E and Col Meadows Taylor used the line drawings and engravings along with the photographs for their volumes on Bijapur.

In 1884 James Burgess introduced nearly 20 photographs in his Archaeological Report on Bijapur.

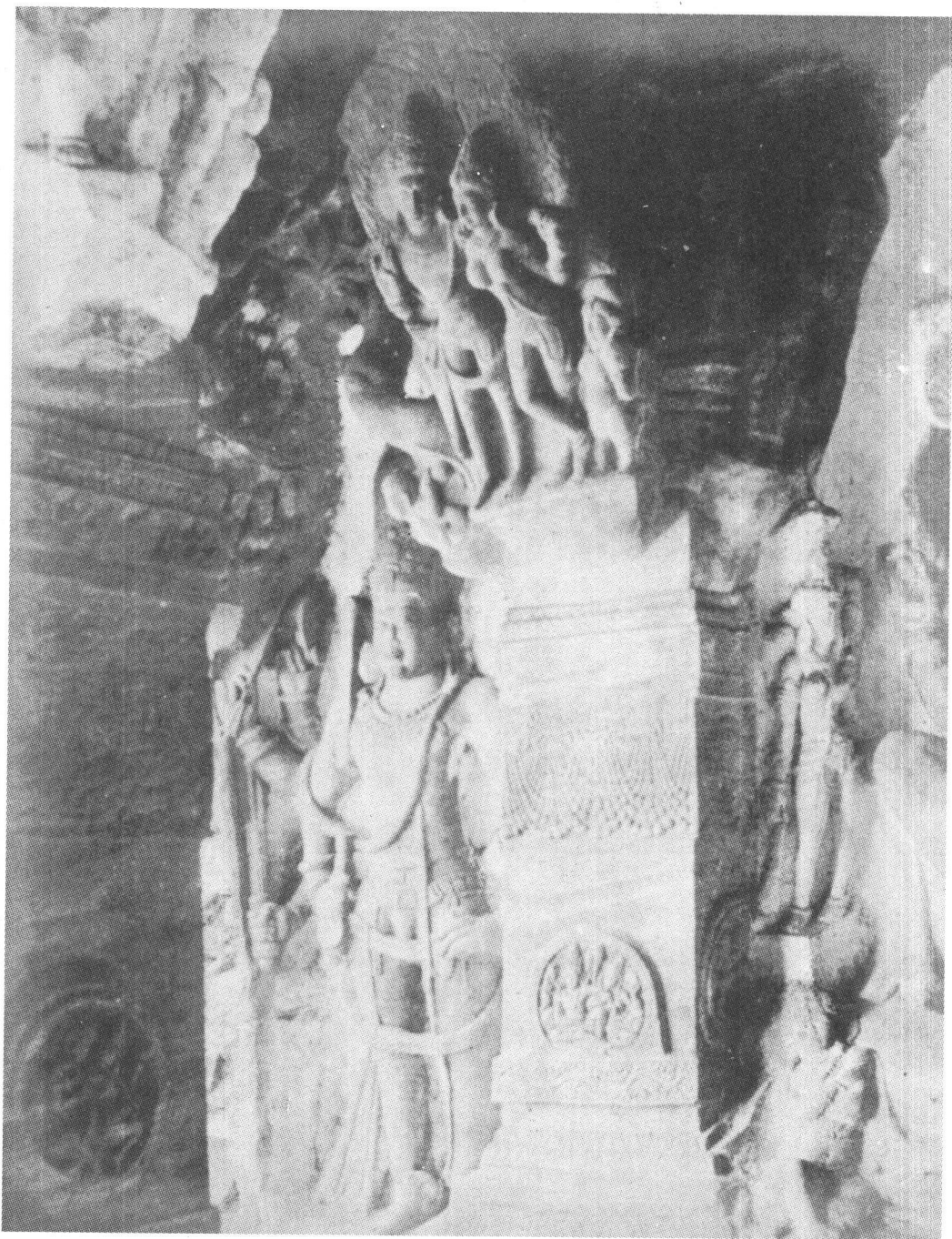
Later on Stella, Percy Brown and Henry Cousens published more and more line drawings and Photographs on Bijapur in their volumes. Photographs in the following pages have been selected from the above sources.



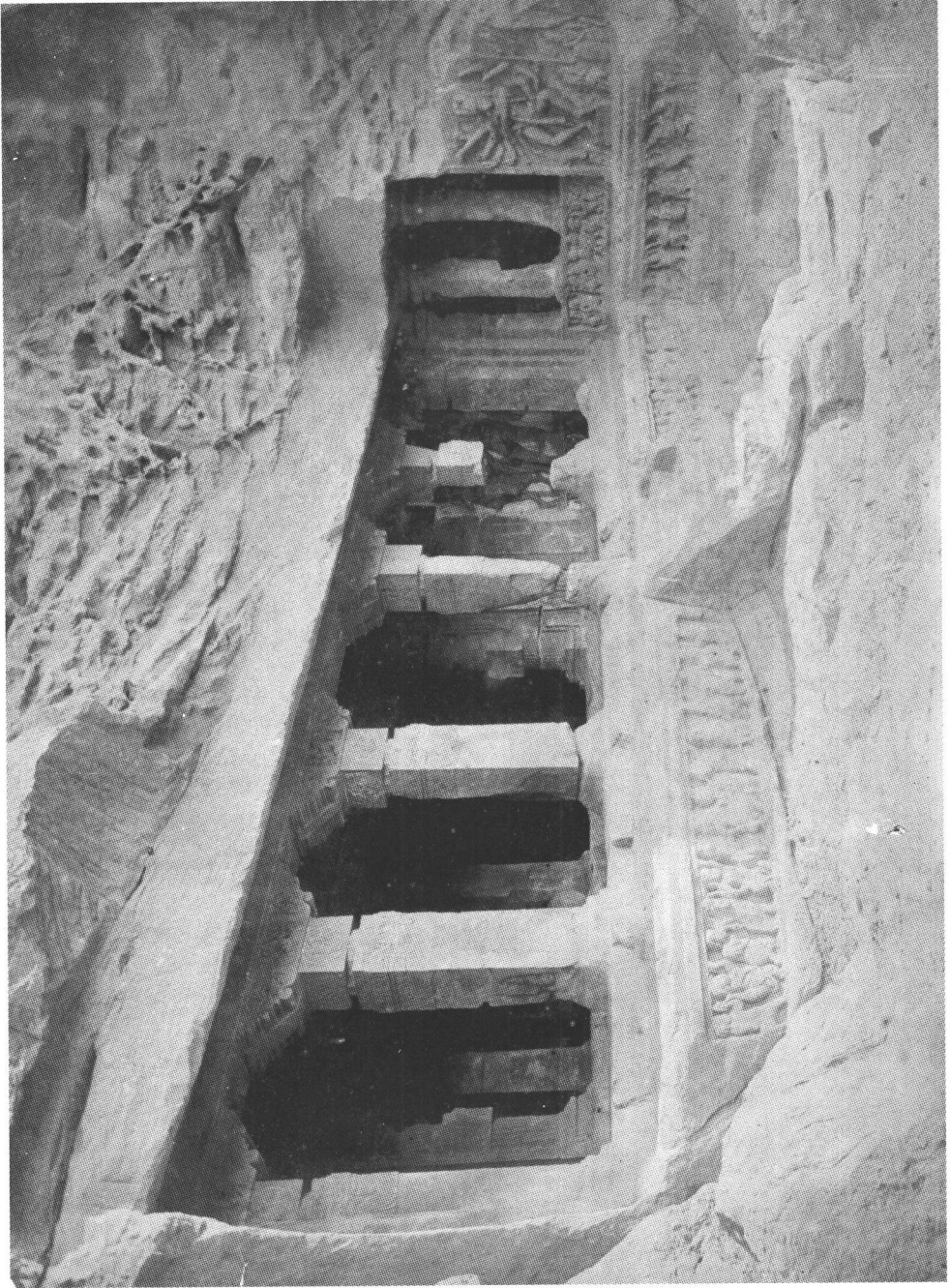
PARAVASUDEVA, CAVE III, BADAMI.



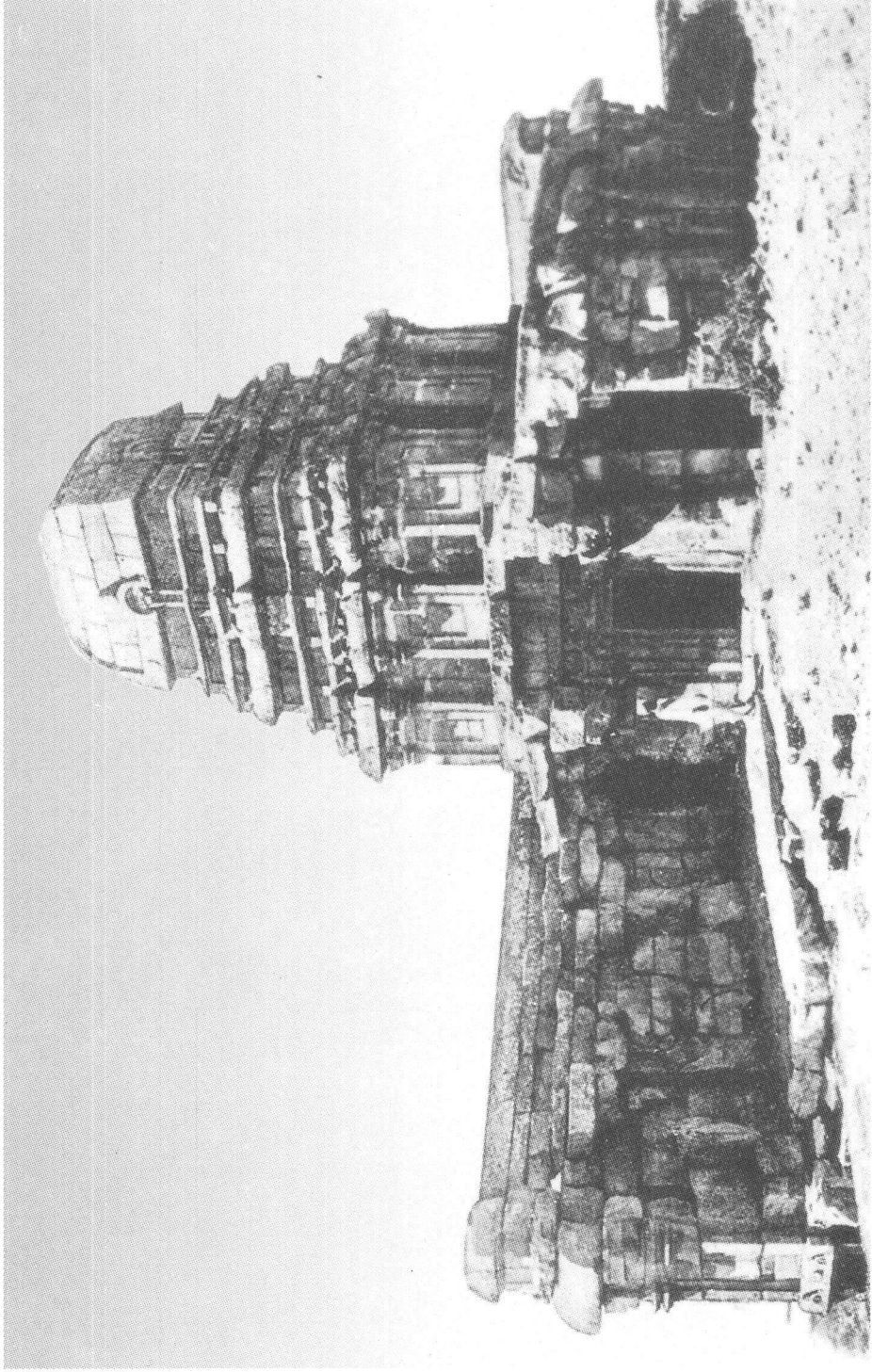
NARASIMHA, CAVE IV, BADAMI.



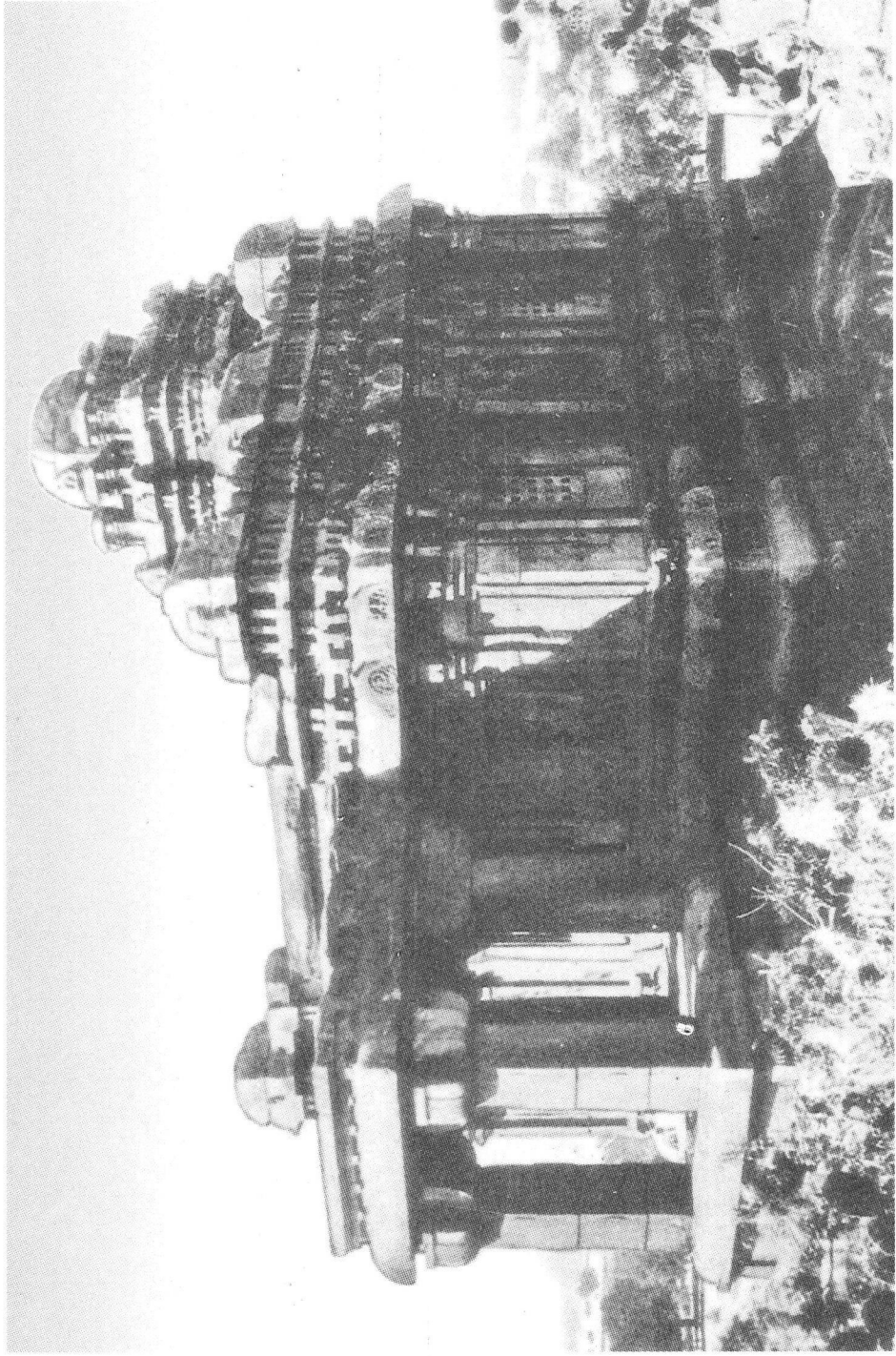
BRACKET FIGURE, CAVE III, BADAMI.



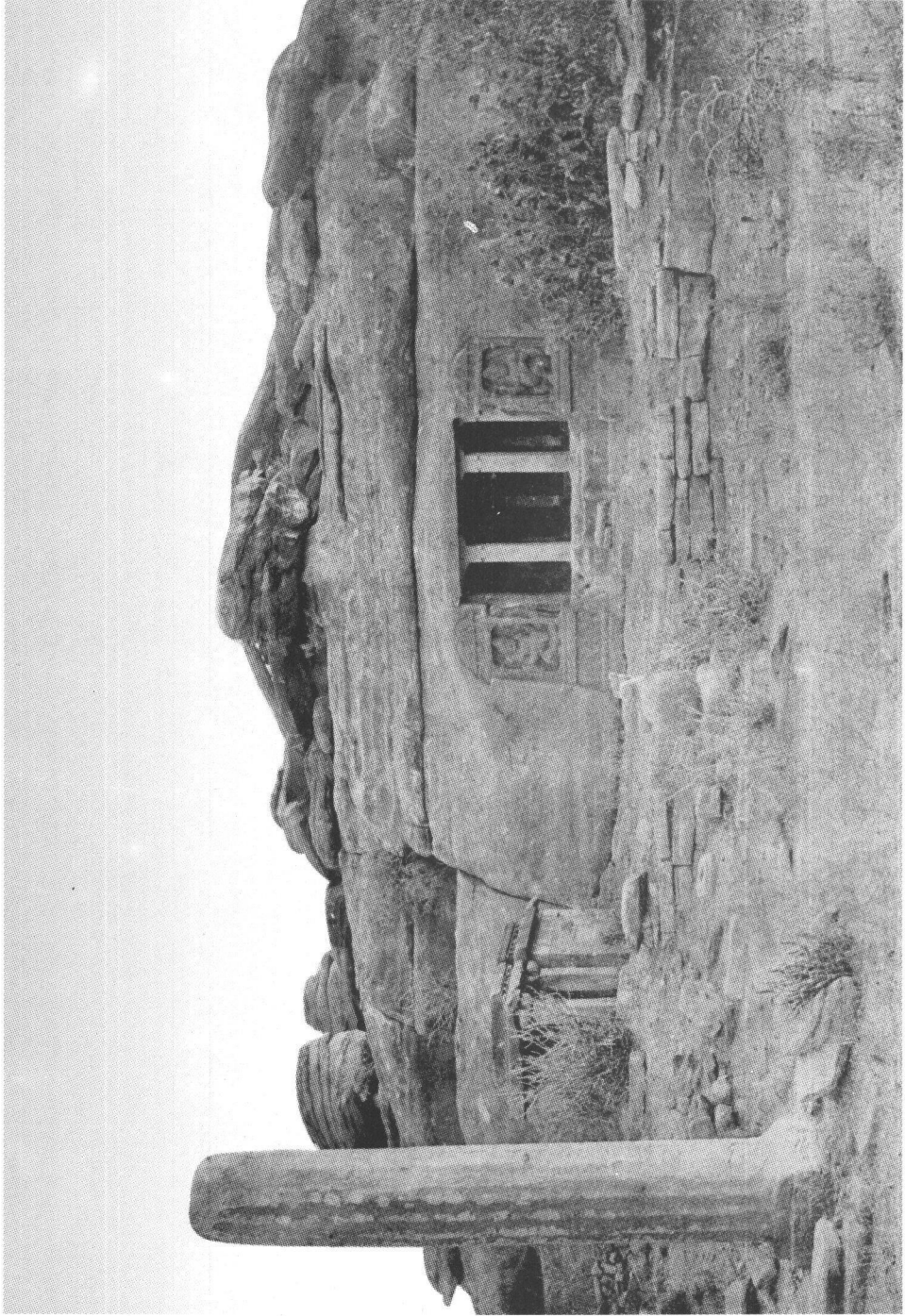
OUTER VIEW, CAVE I, BADAMI.



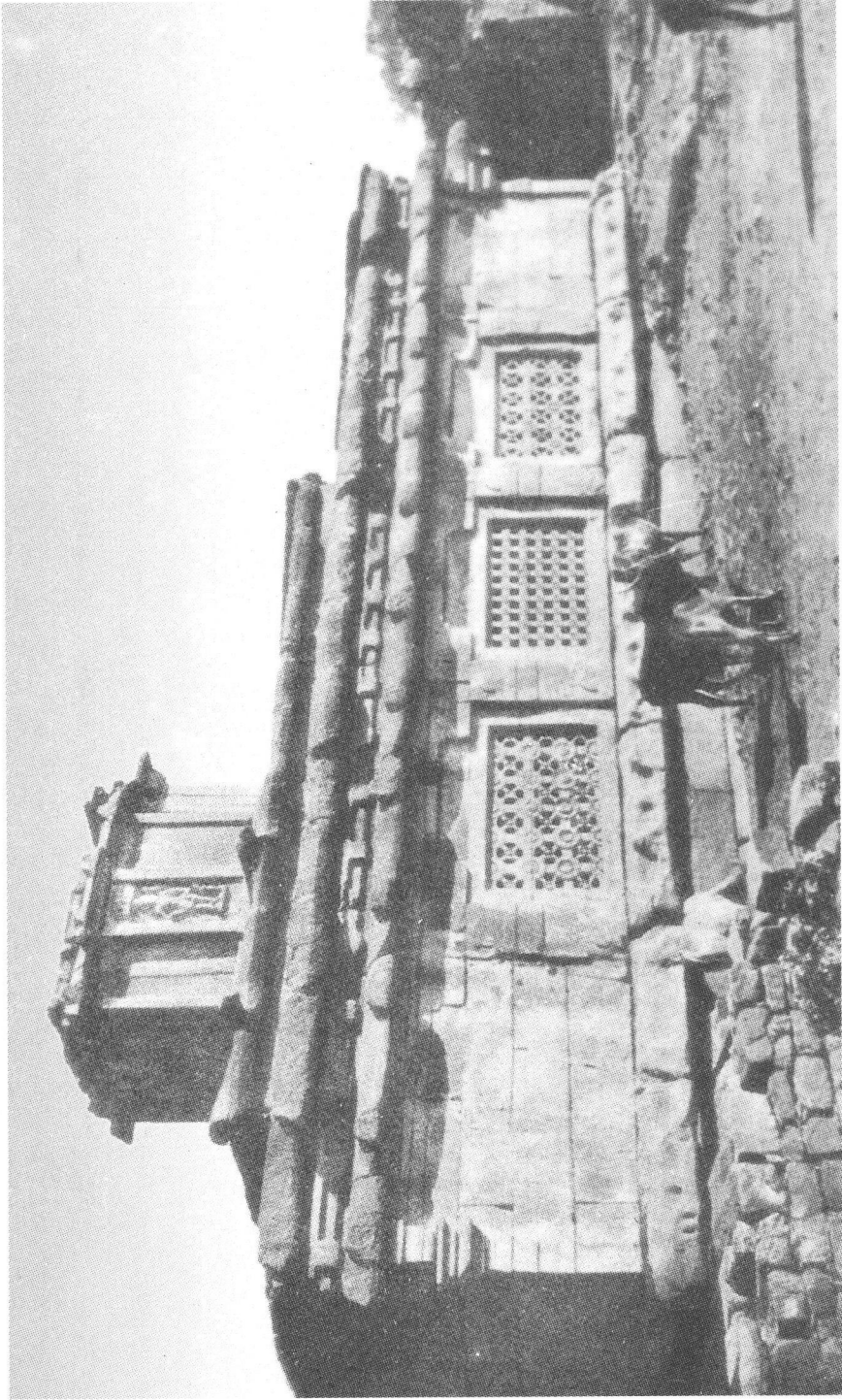
UPPER SHIVALAYA, BADAMI.



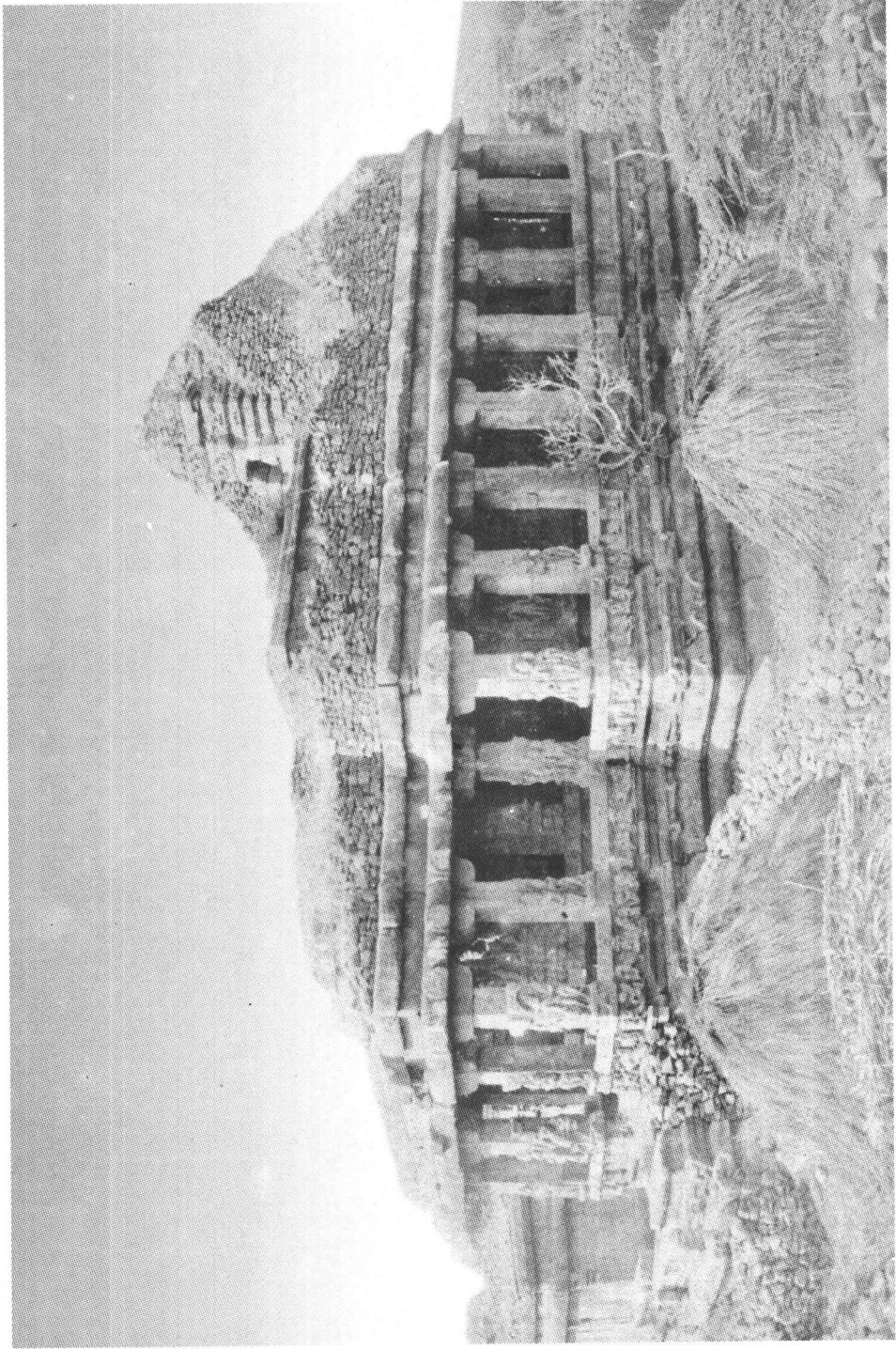
MALAGITTI SHIVALAYA, BADAMI.



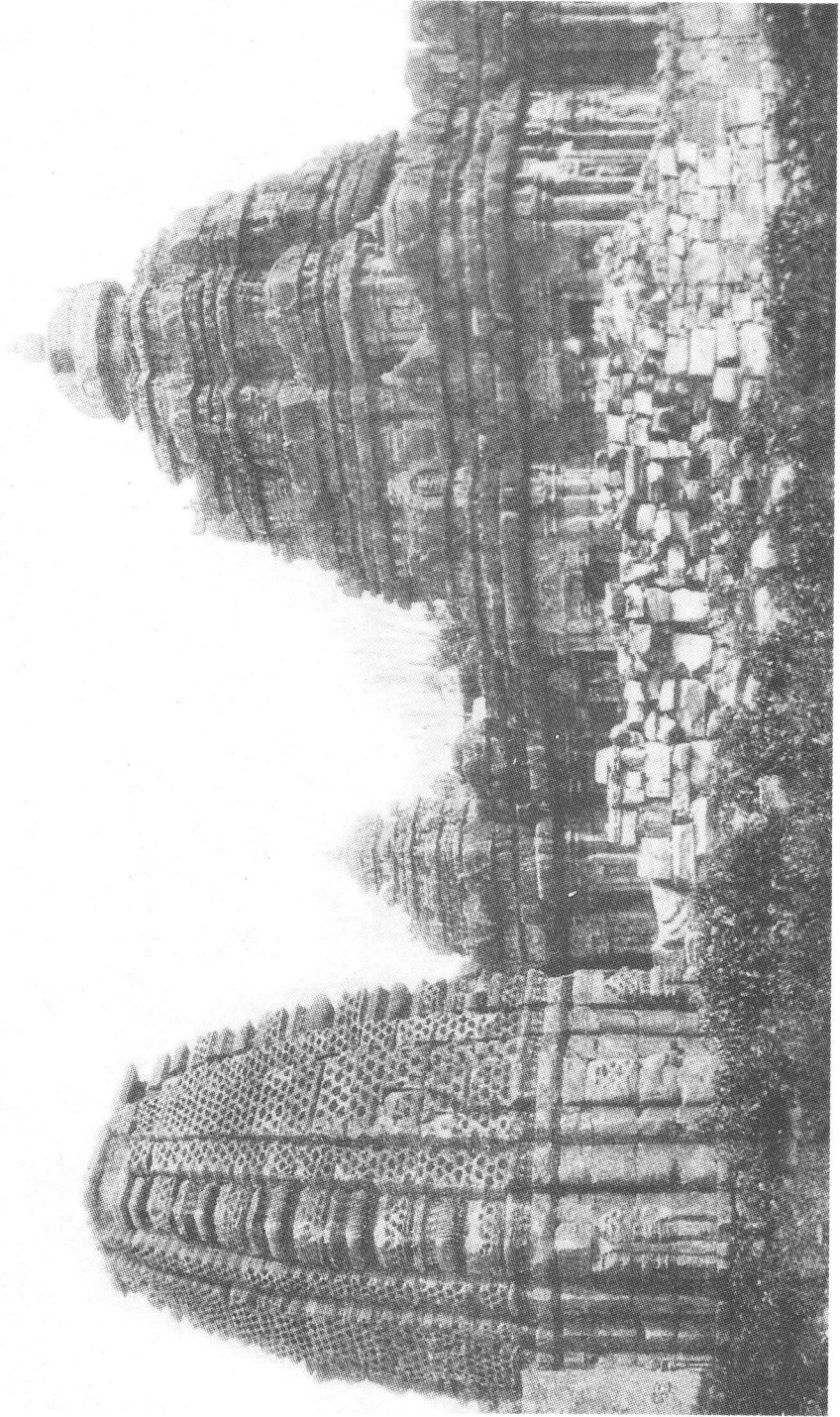
RAVAL PAHADI, AIHOLE.



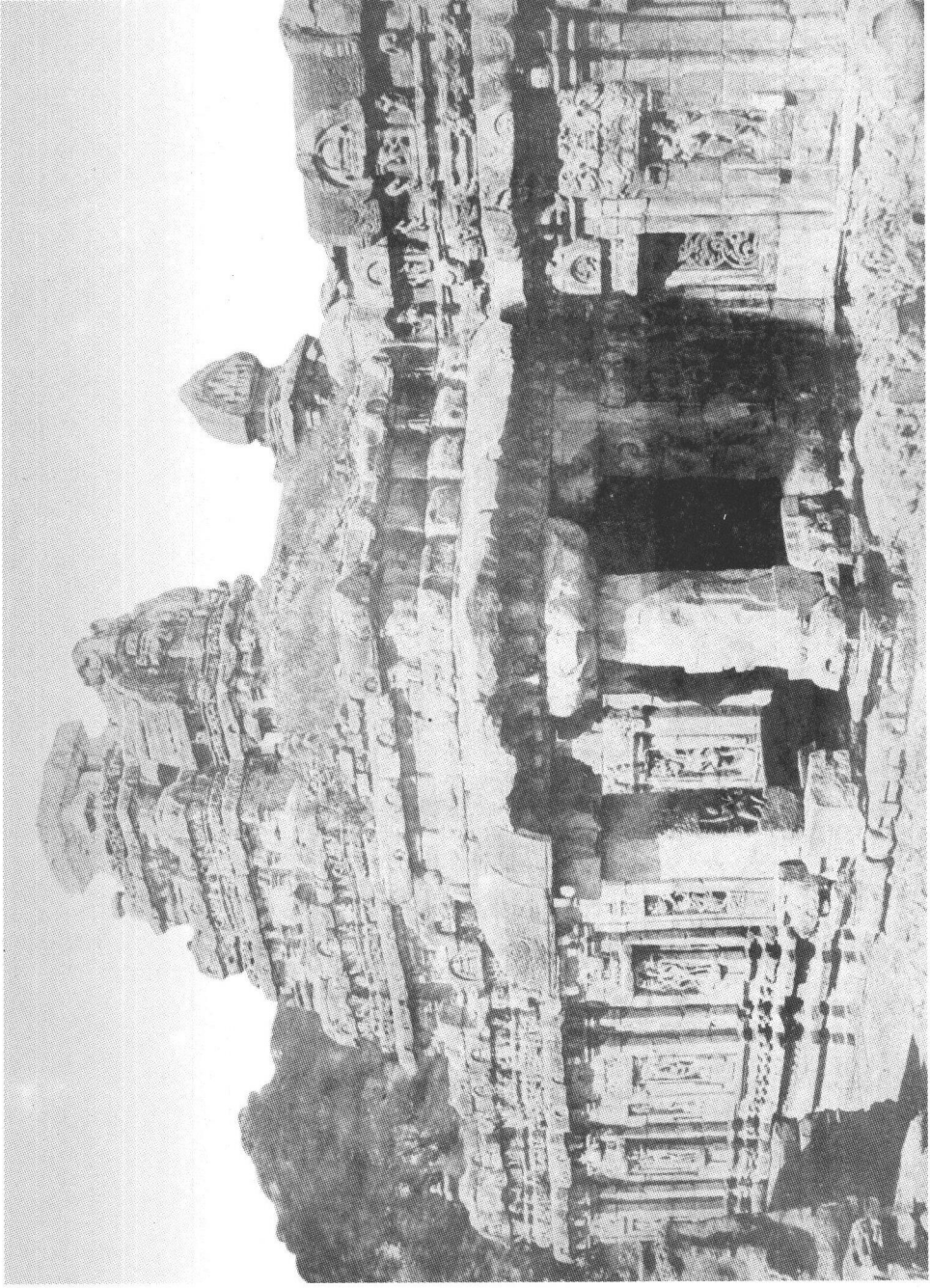
LADKHAN TEMPLE, AIHOLE.



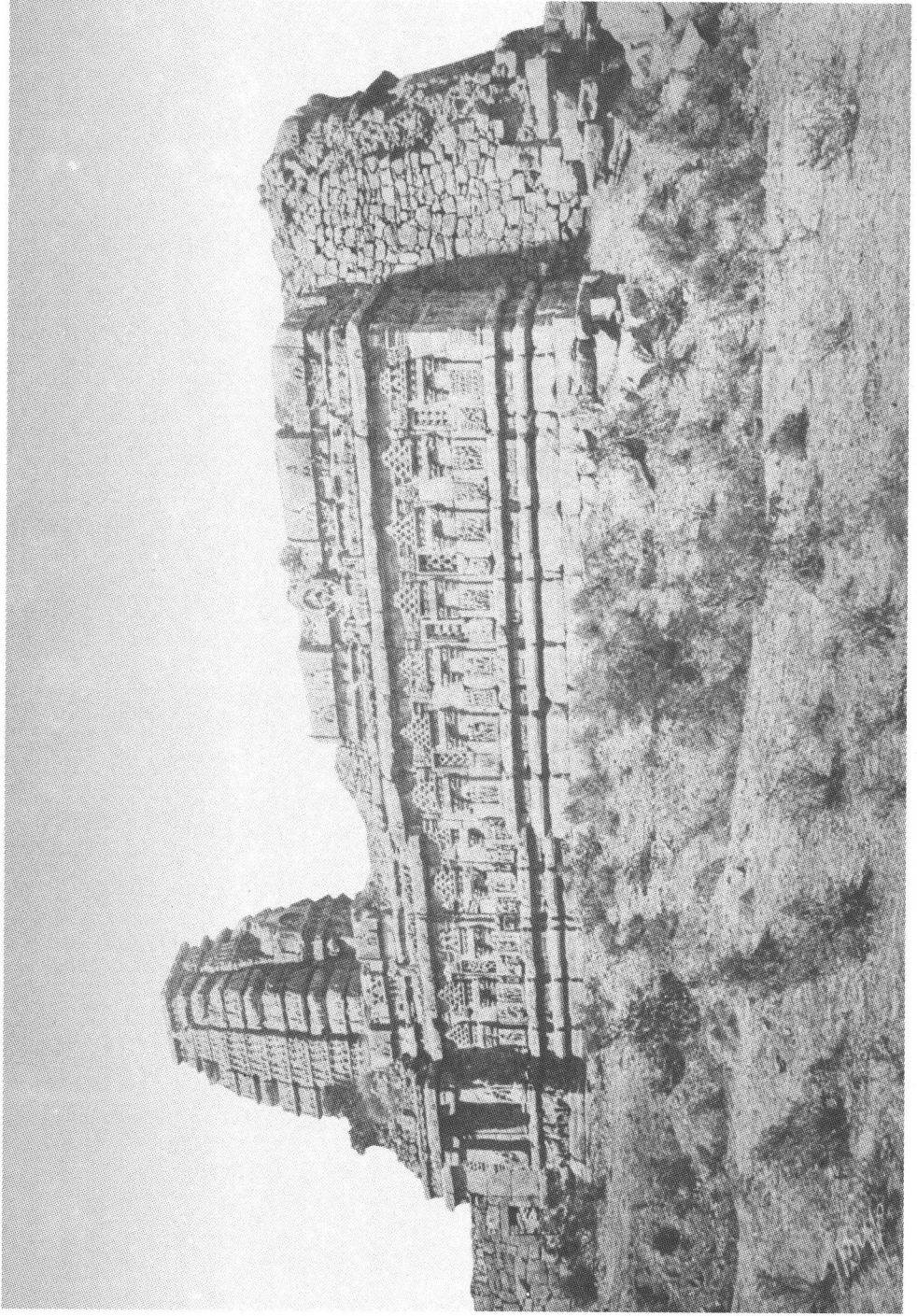
DURGA TEMPLE, AIHOLE.



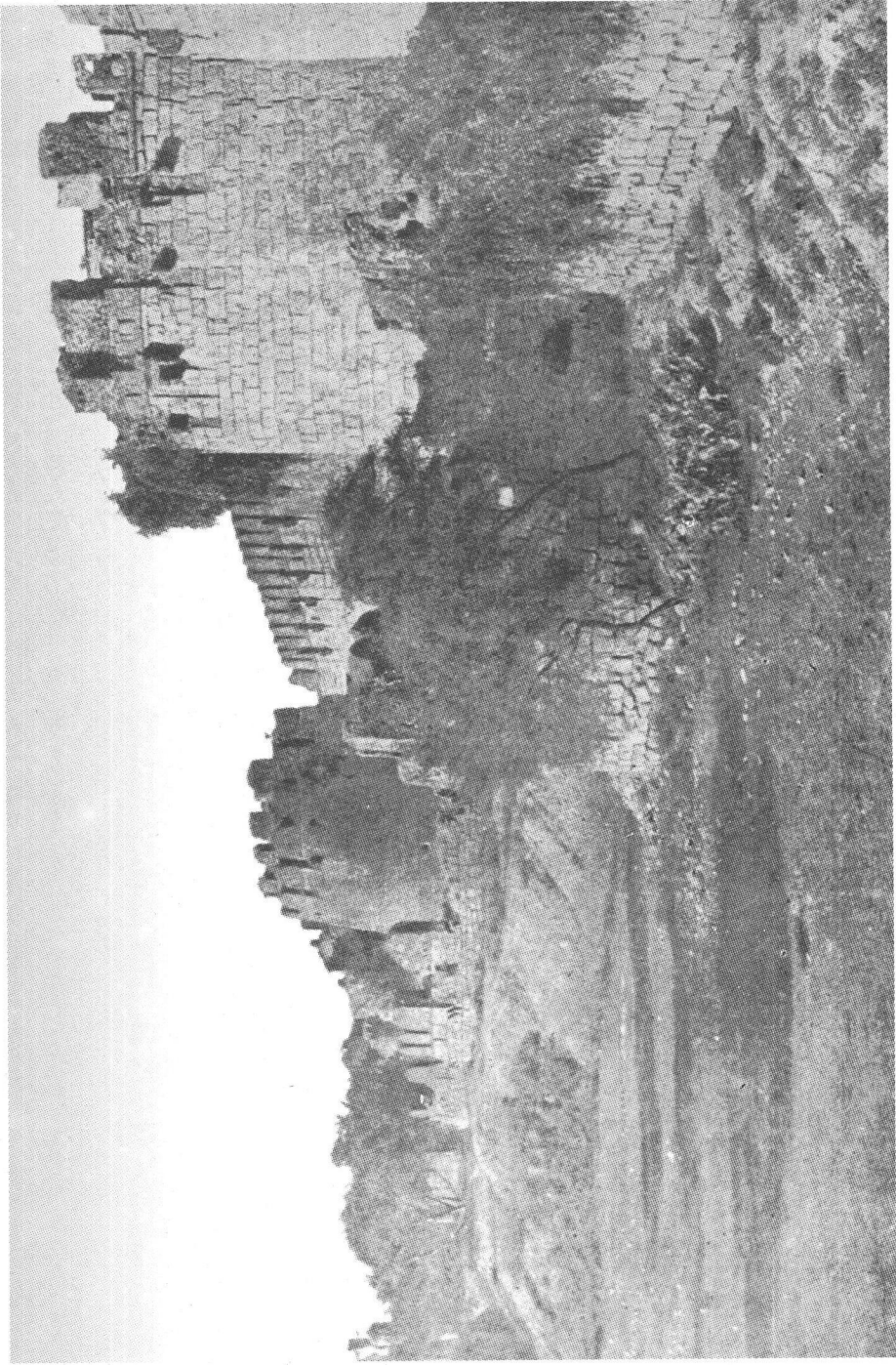
KASHINATHA AND MALLIKARJUNA TEMPLES, PATTADAKAL.



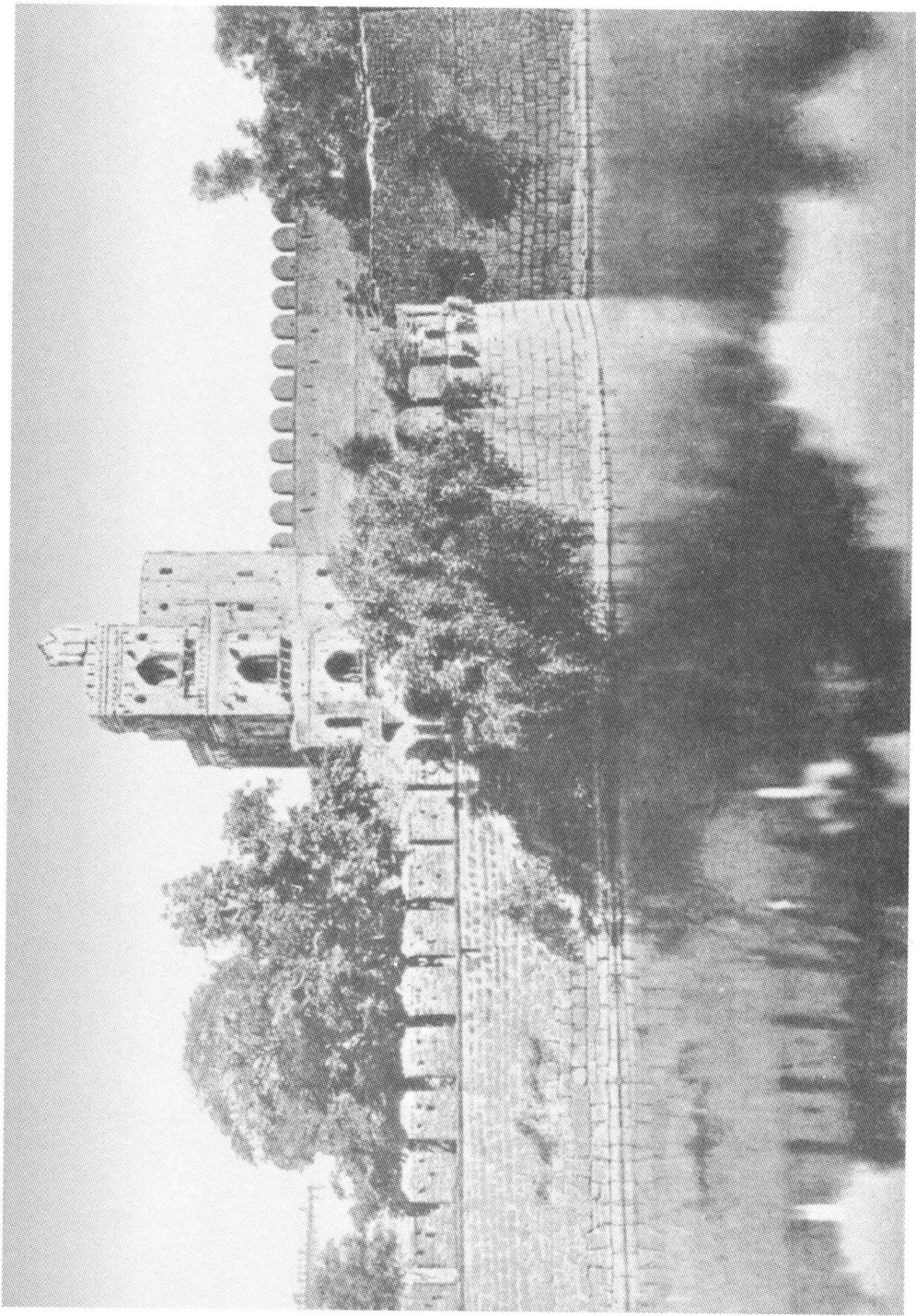
VIRUPAKSHA TEMPLE, PATTADAKAL.



PAPANATHA TEMPLE, PATTADAKAL.



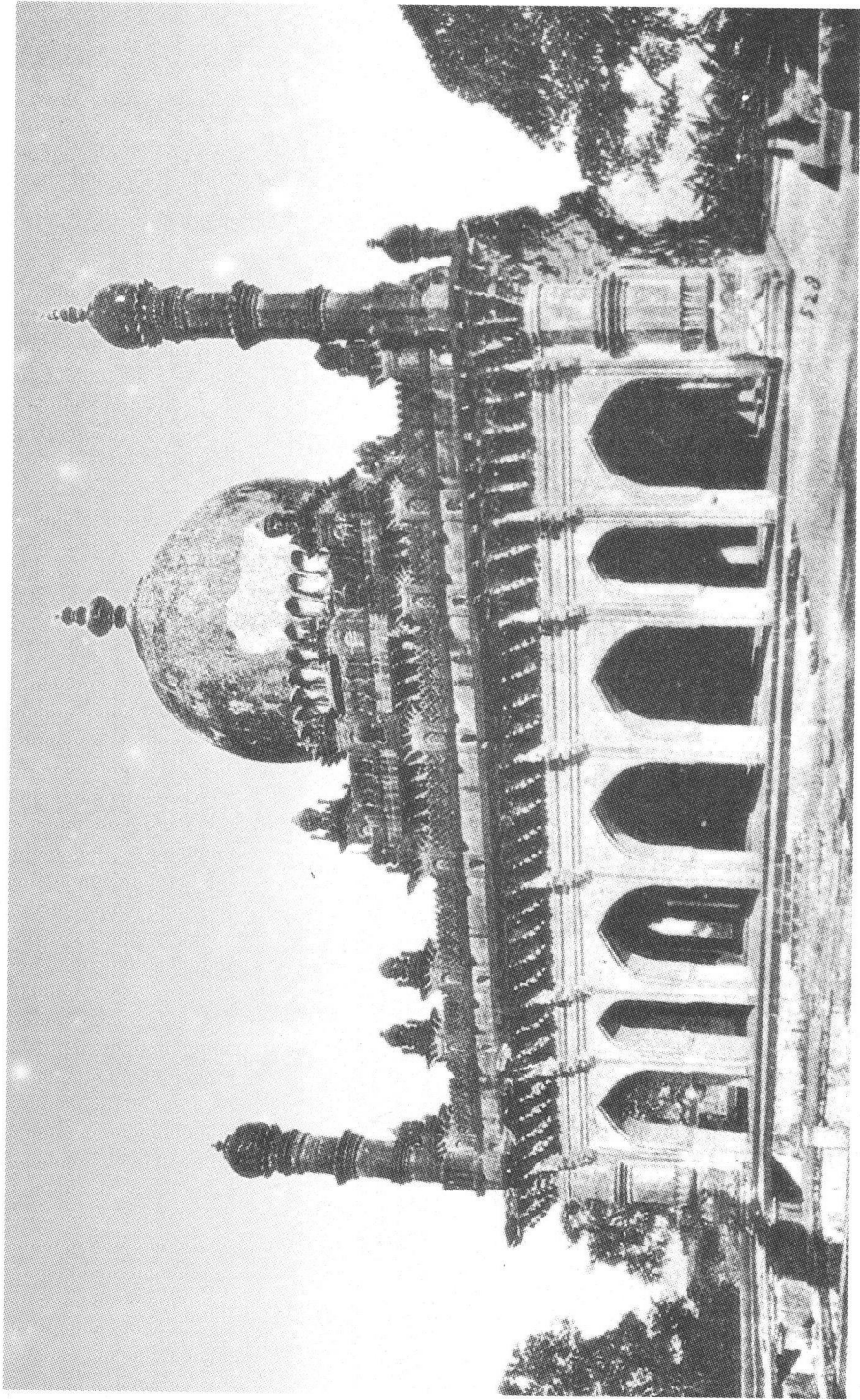
FORT, BIJAPUR.



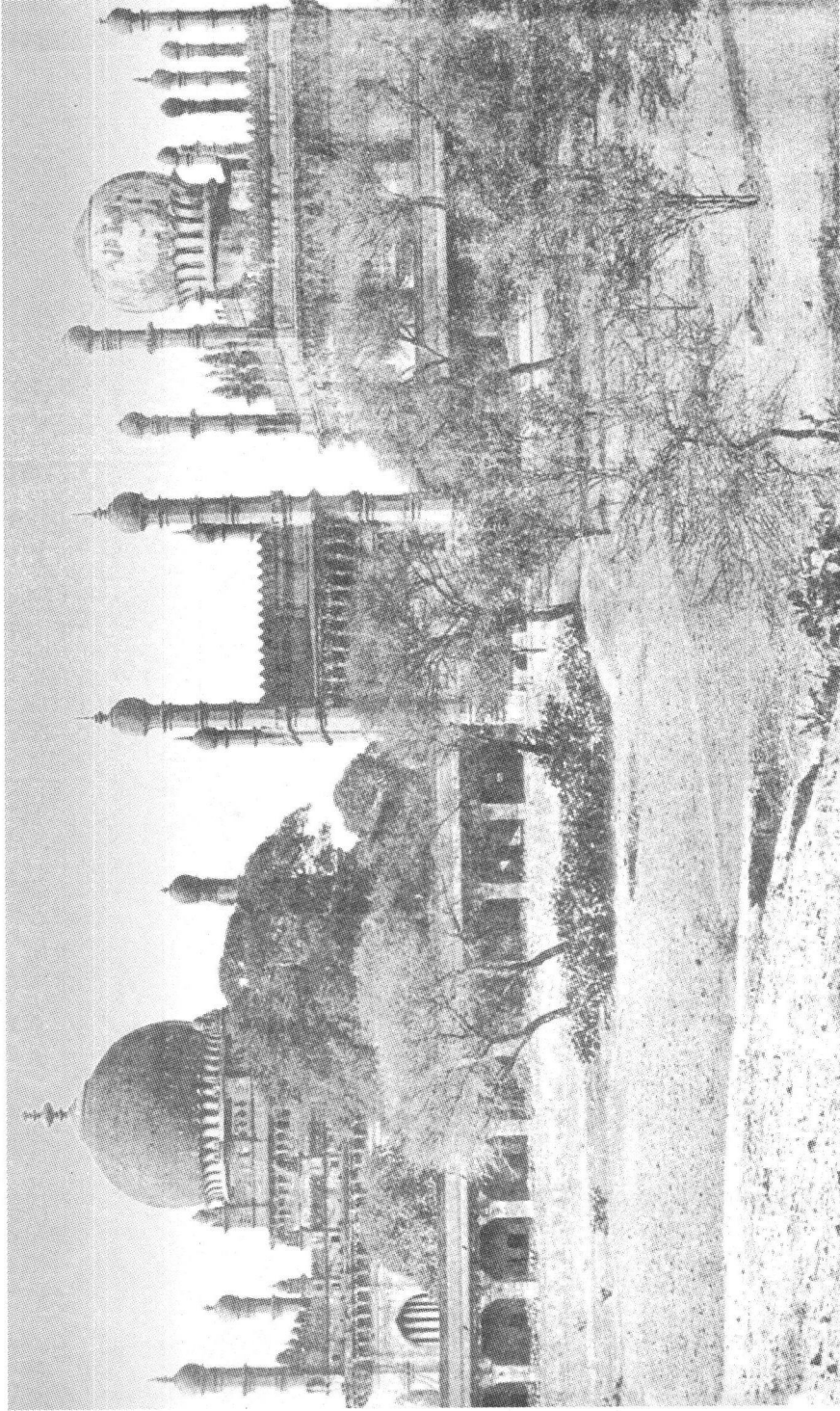
FORT BIJAPUR (Satmanzil in the background)



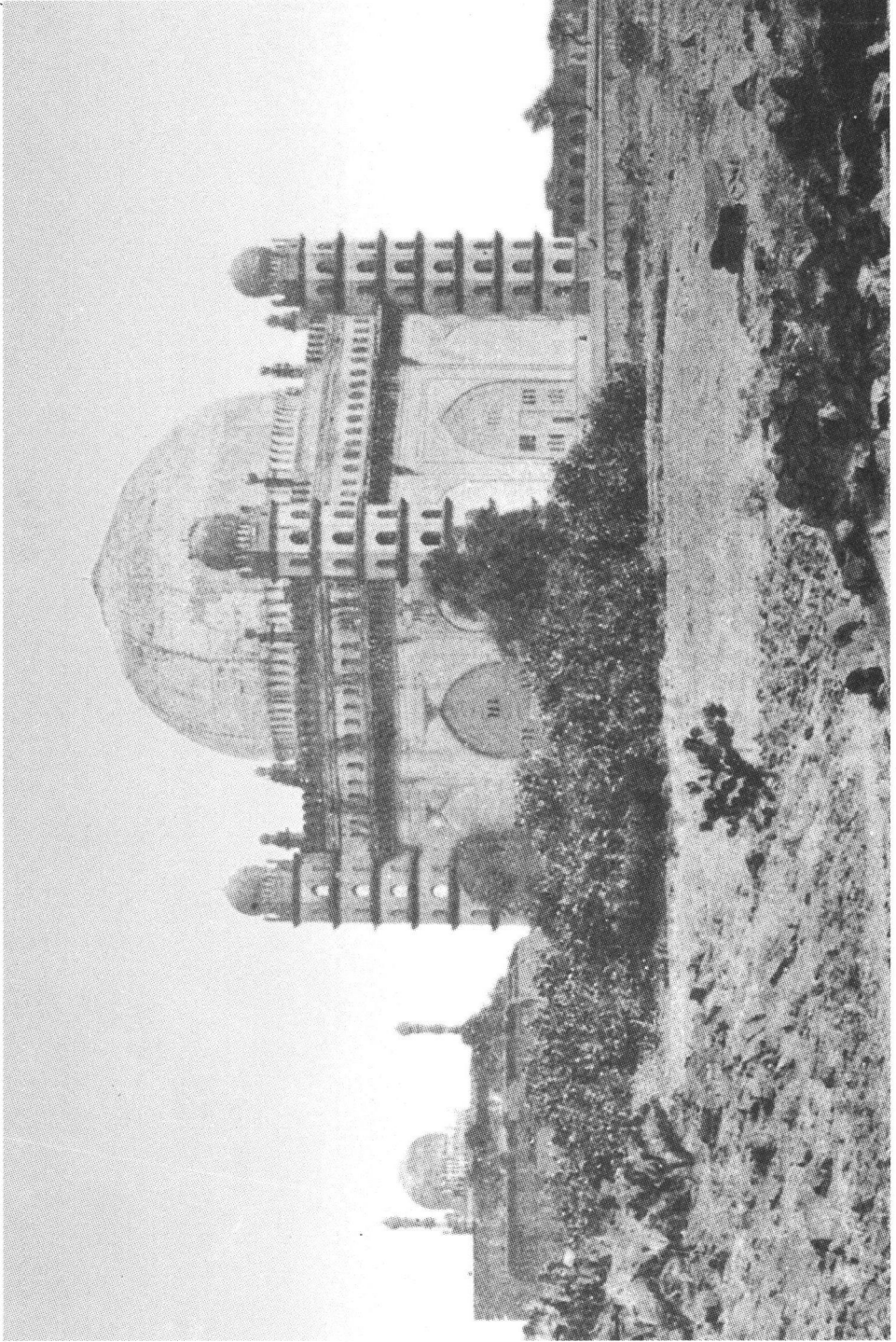
KARIMUDIN MASJID, BIJAPUR.



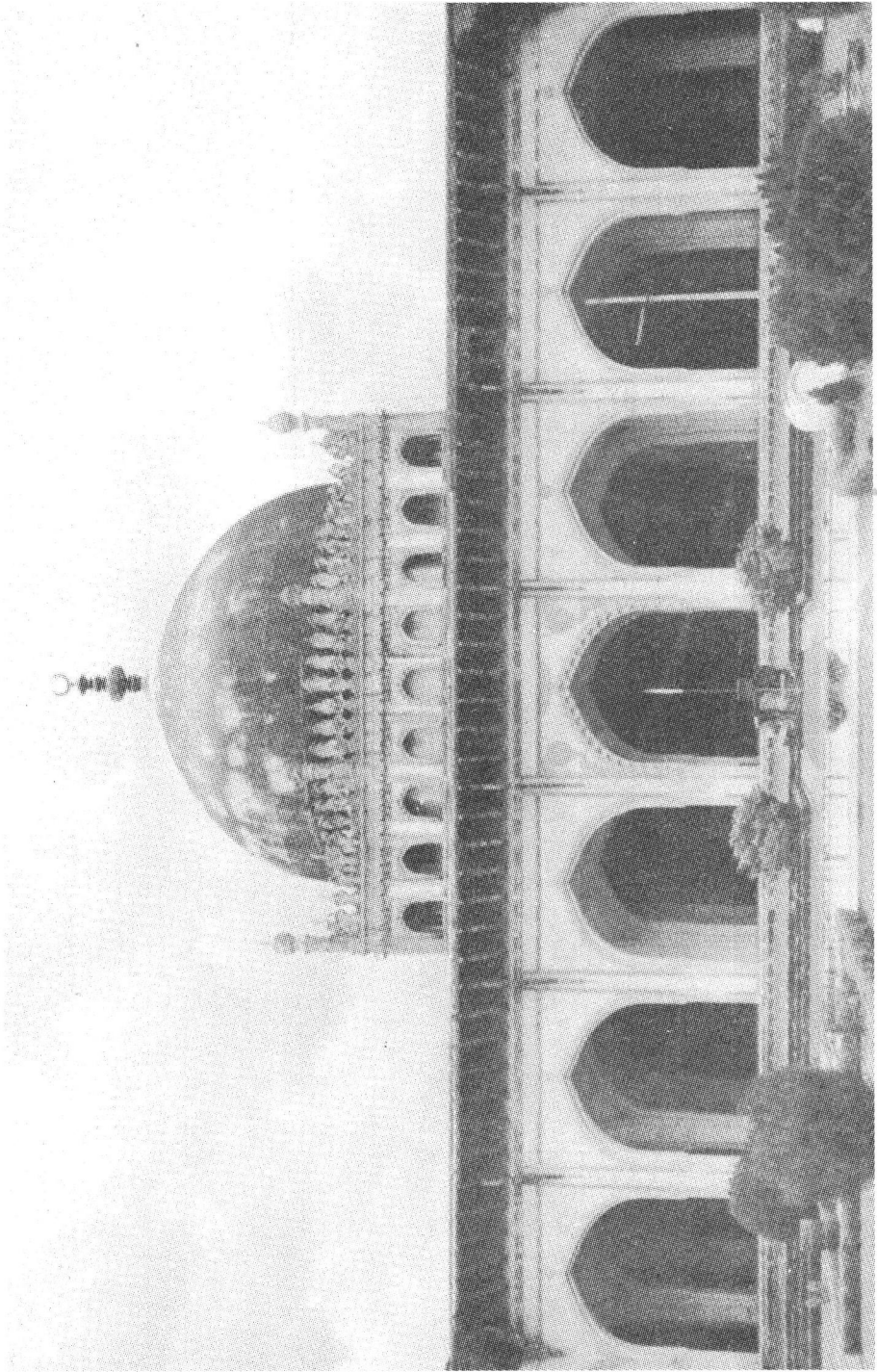
IBRAHIM ROZA, BIJAPUR.



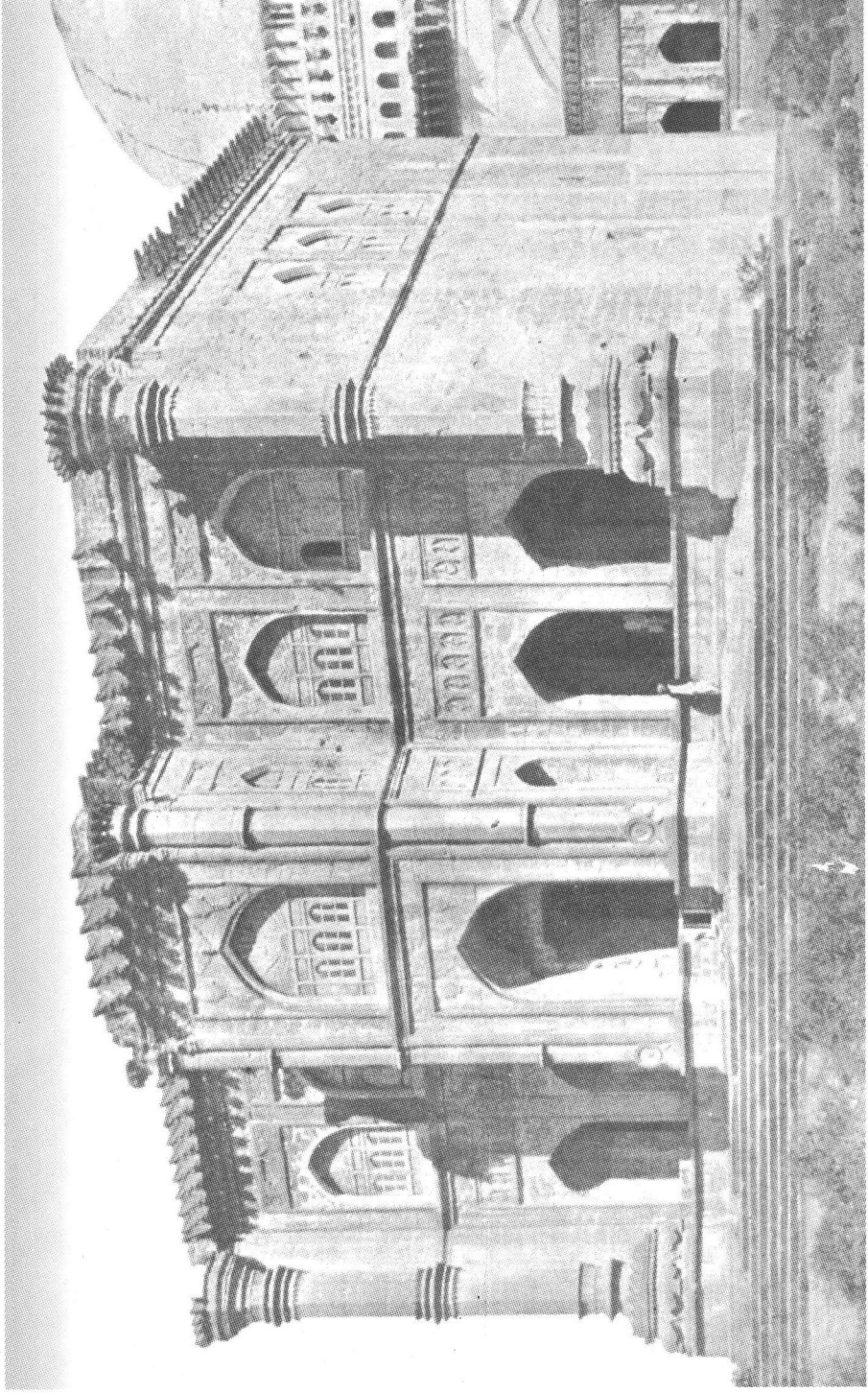
IBRAHIM ROZA WITH MASJID (outer view)



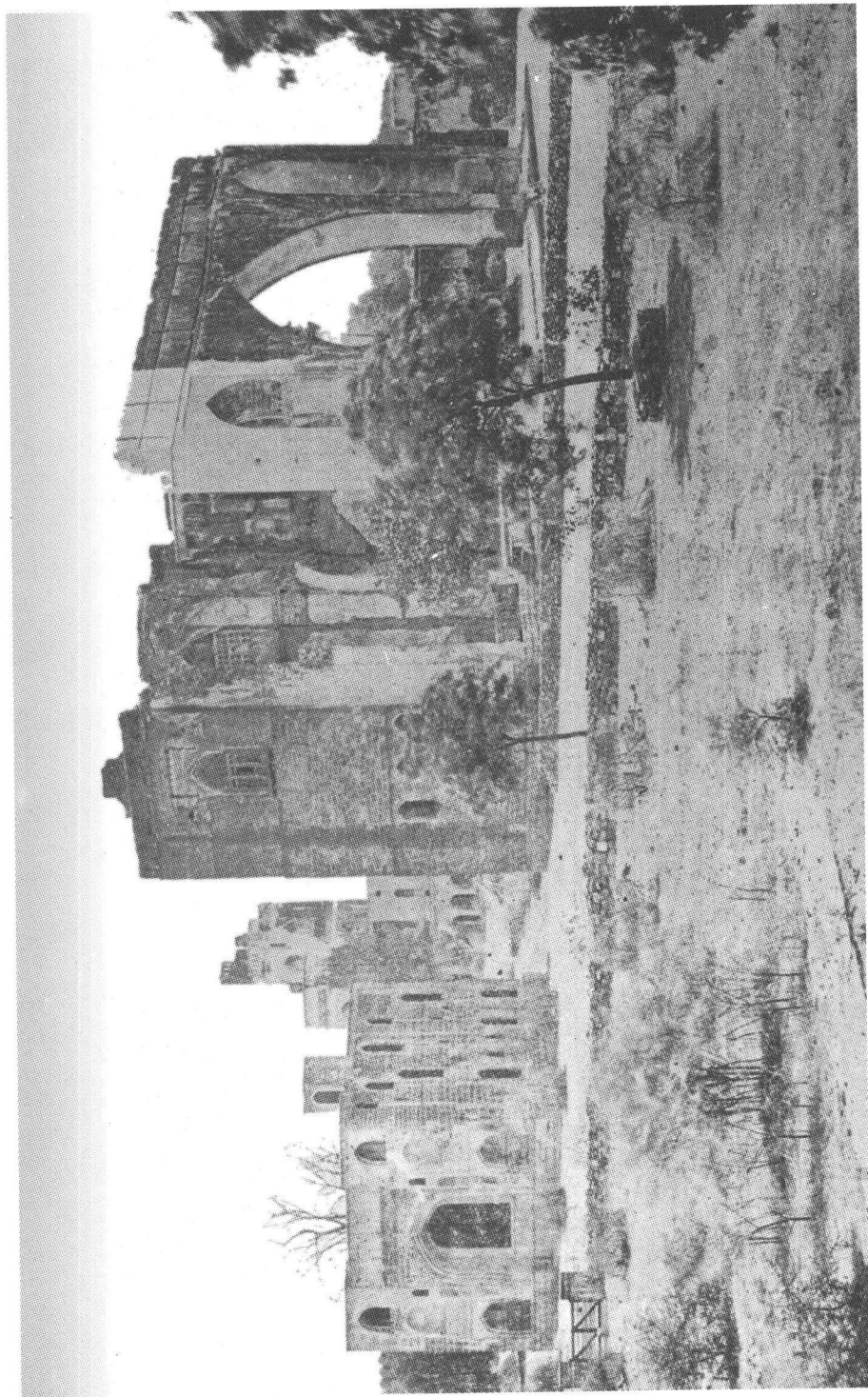
GOLGUMBAZ, BIJAPUR.



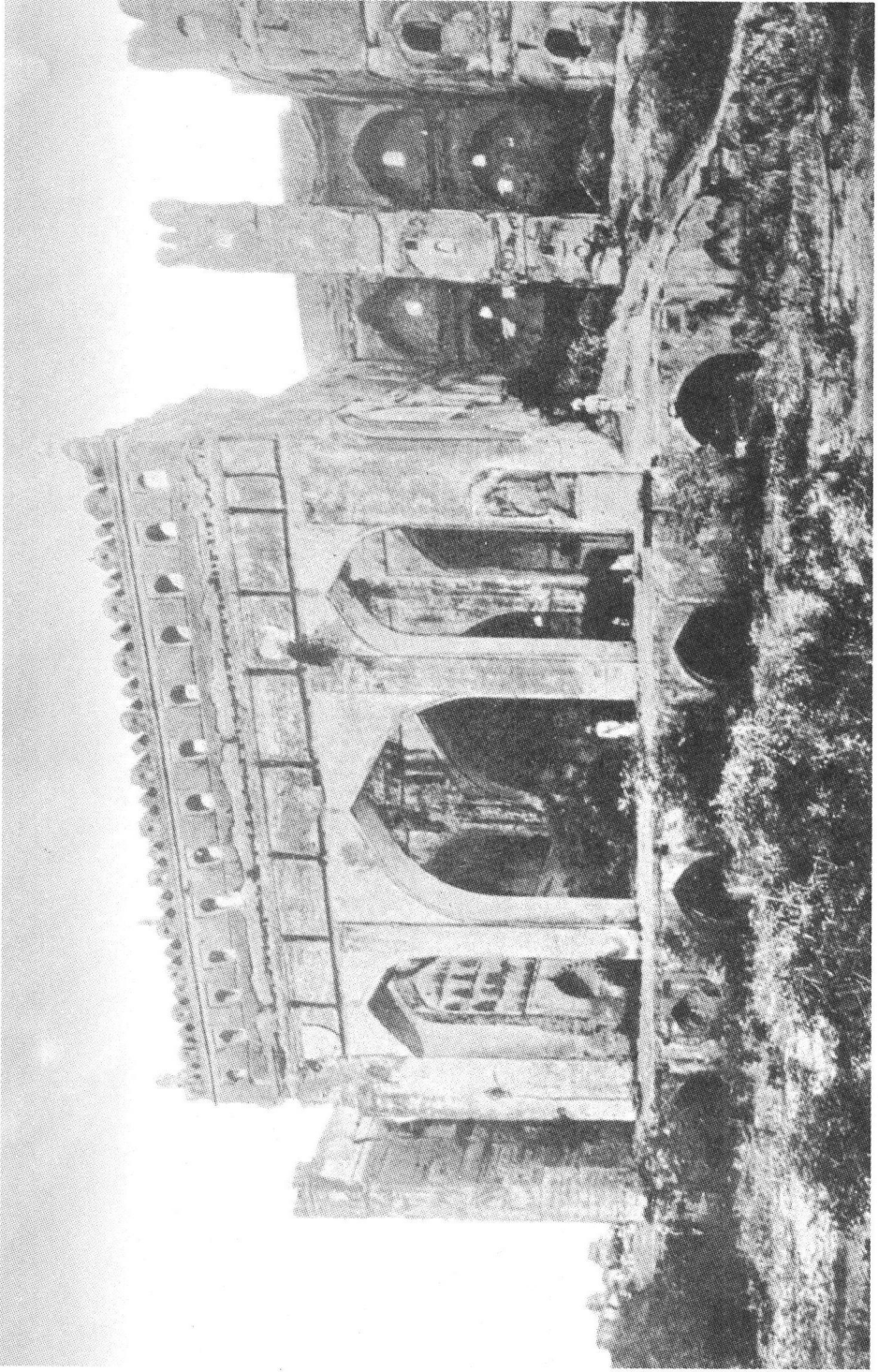
JAMIA MASJID, BIJAPUR.



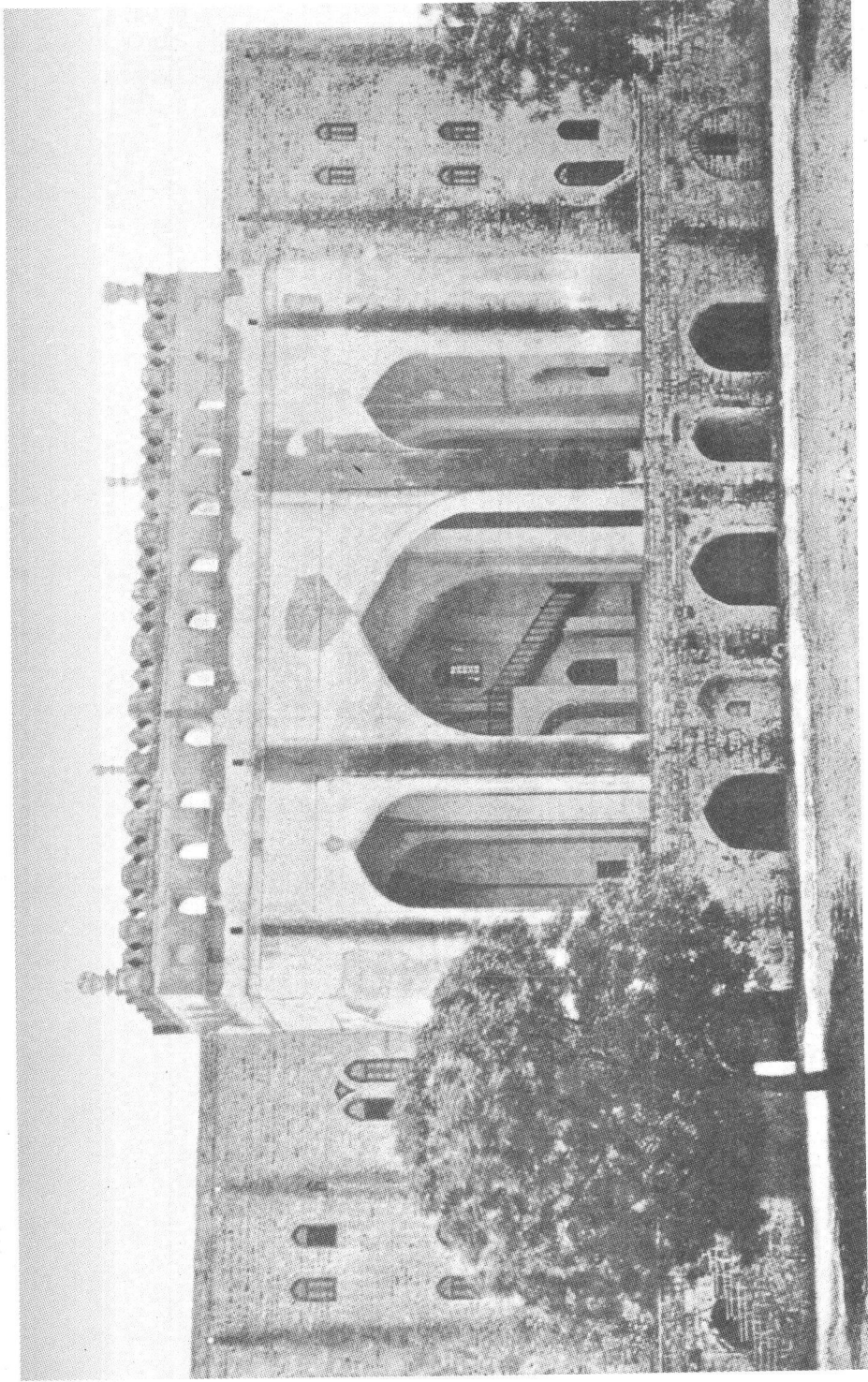
NAGARKHAN (Government Museum), BIJAPUR.



GAGAN MAHAL WITH CATHEDREL AND SATMANZIL, BIJAPUR.



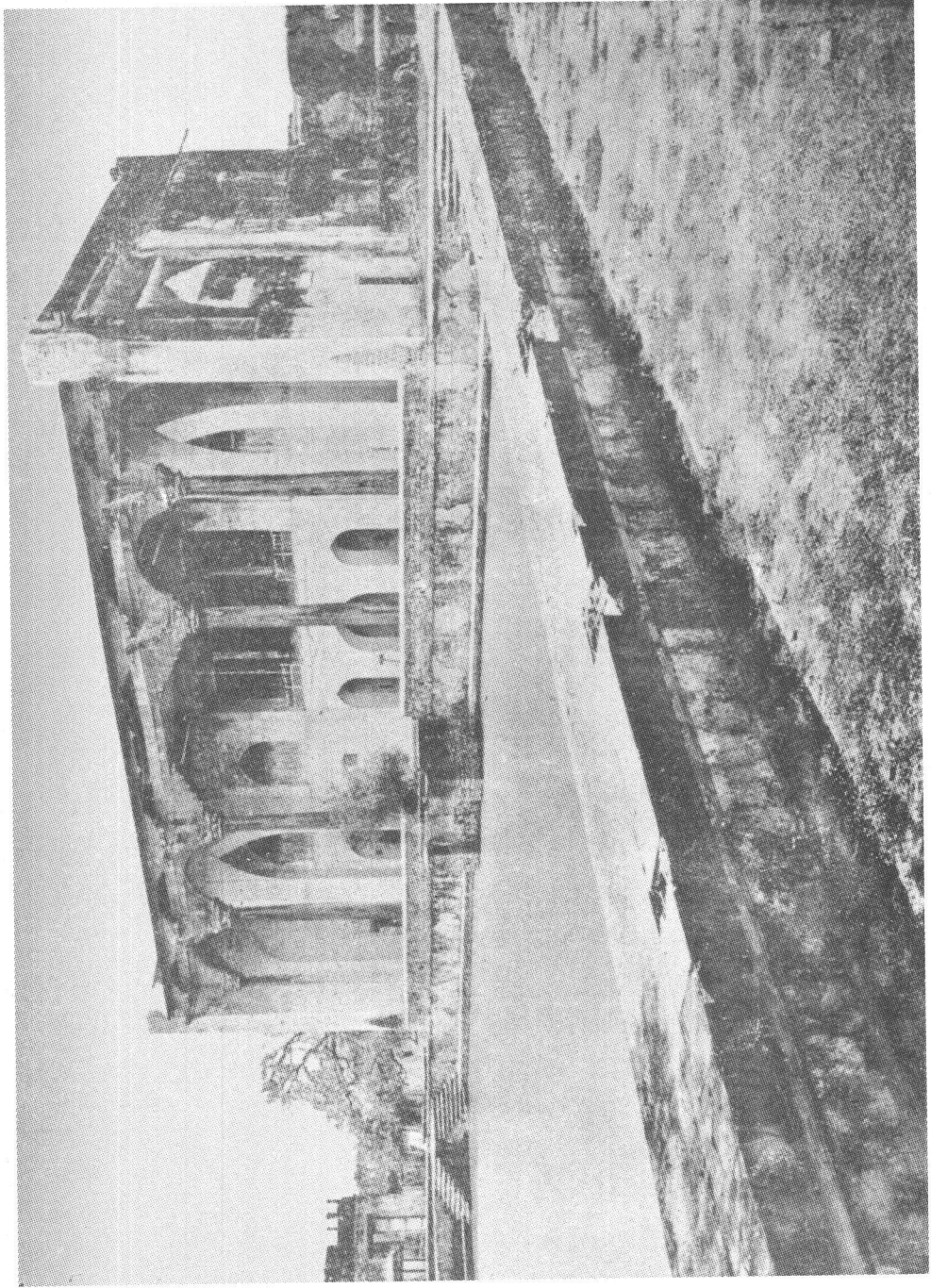
ANAND MAHAL, BEFORE CONSERVATION, BIJAPUR.



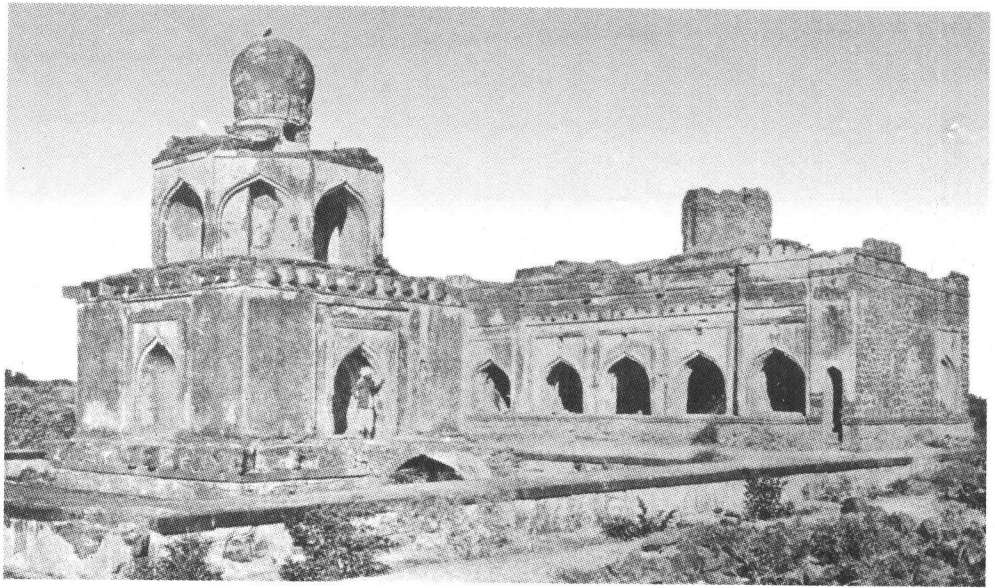
ANAND MAHAL, AFTER CONSERVATION, BIJAPUR.



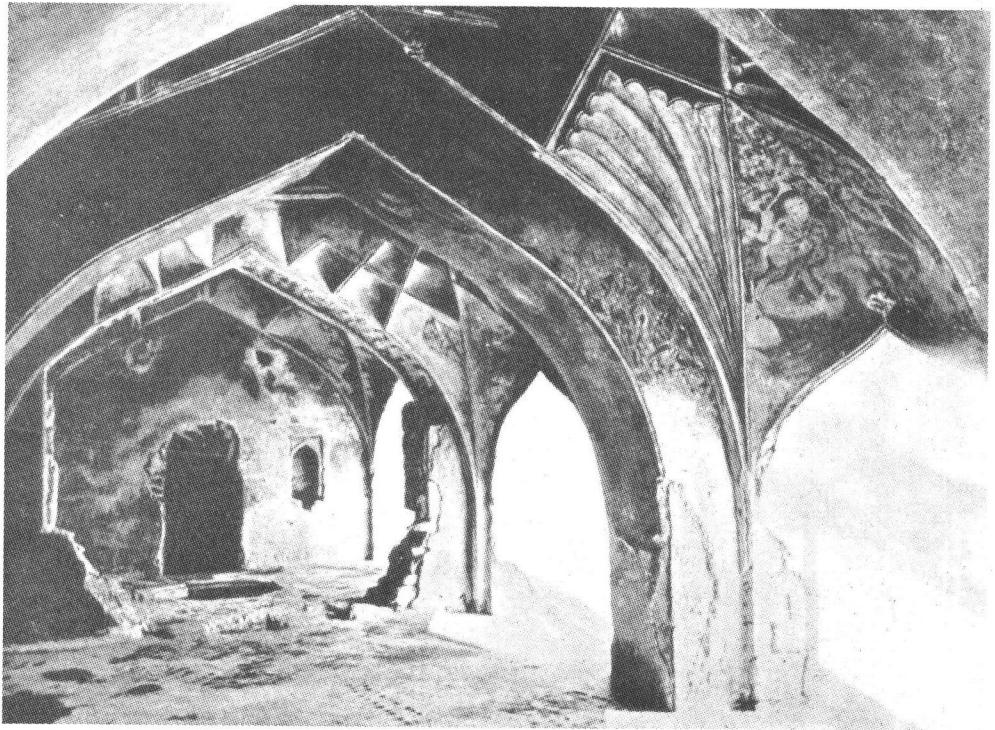
MURAL PAINTING, ASAR MAHAL, BIJAPUR.



ASAR MAHAL, BIJAPUR.



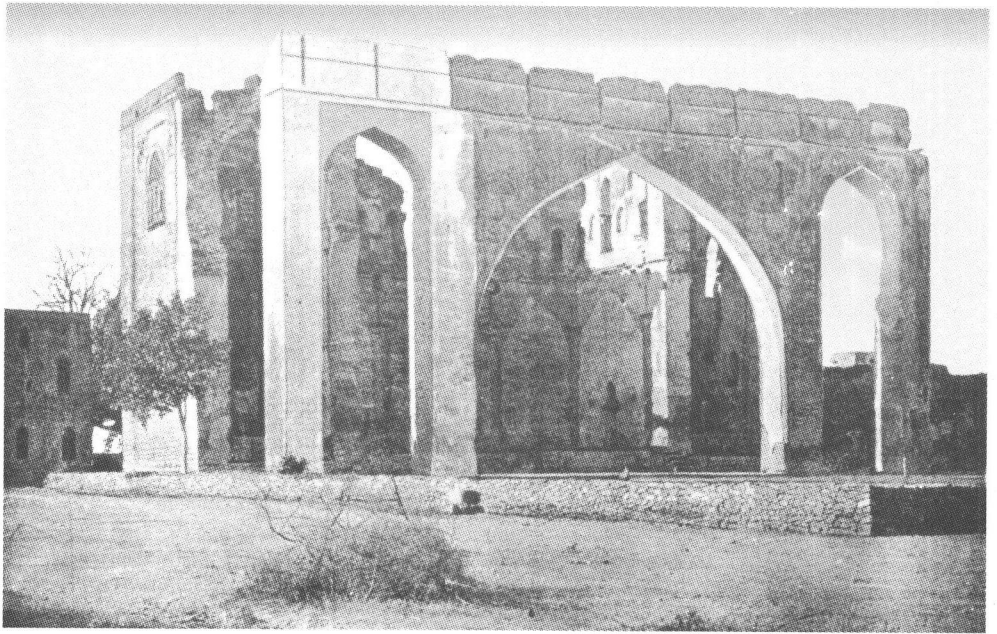
WATER PAVILION, KUMTAGI.



WATER PAVILION, (Inside View) KUMTAGI.



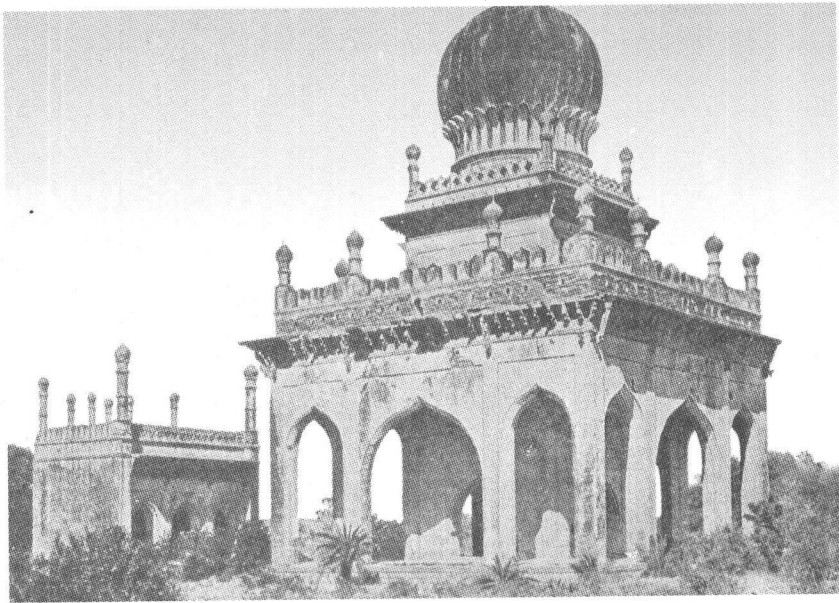
MURAL PAINTING, WATER PAVILION, KUMATAGI.



GAGAN MAHAL, BIJAPUR.



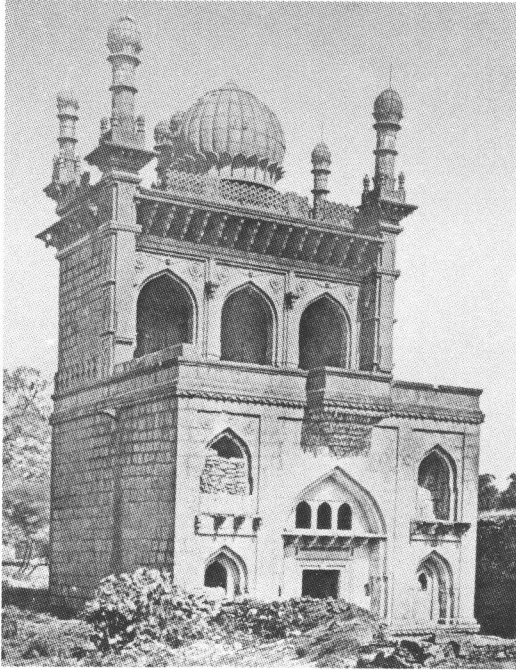
SANGEET MAHAL, NAVARASPUR.



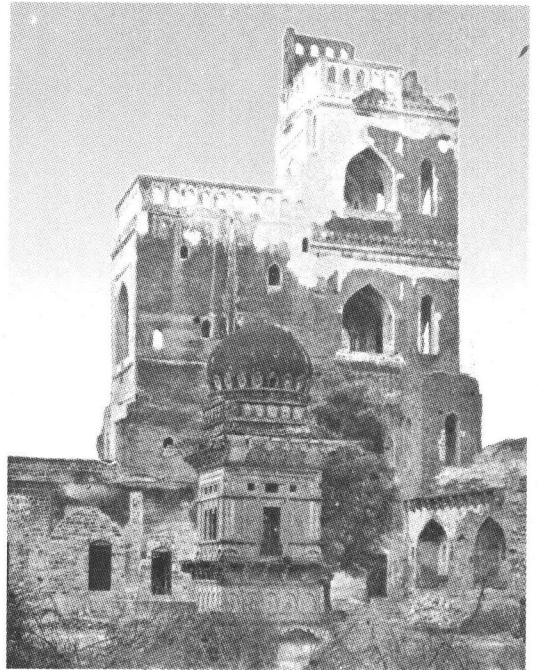
SHAH NAVAZ KHAN'S TOMB, BIJAPUR.



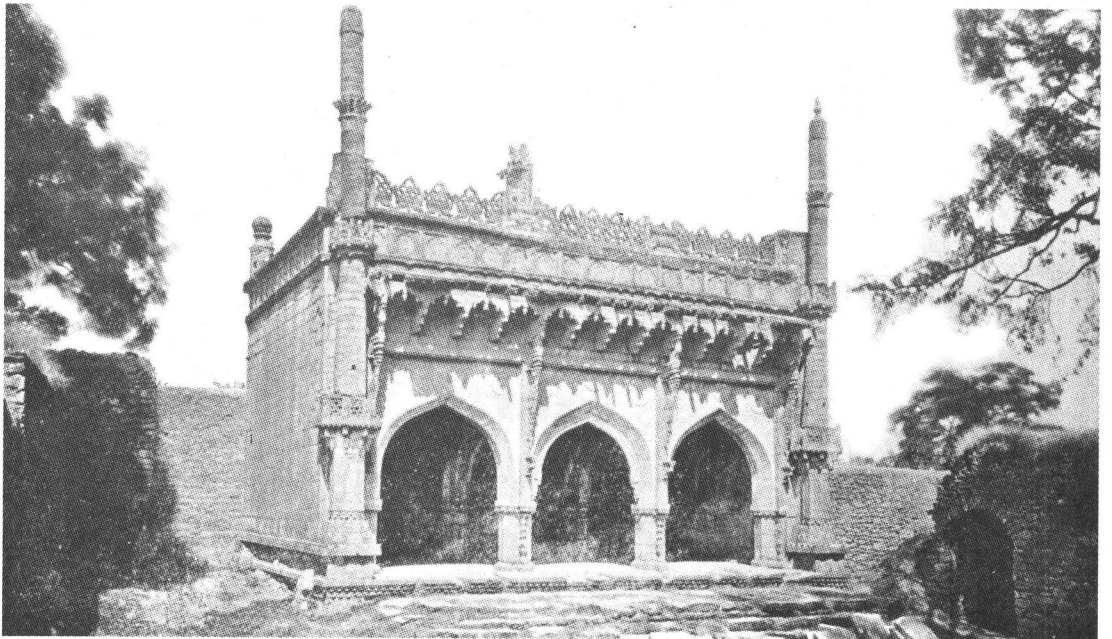
TAJ BAVADI, BIJAPUR.



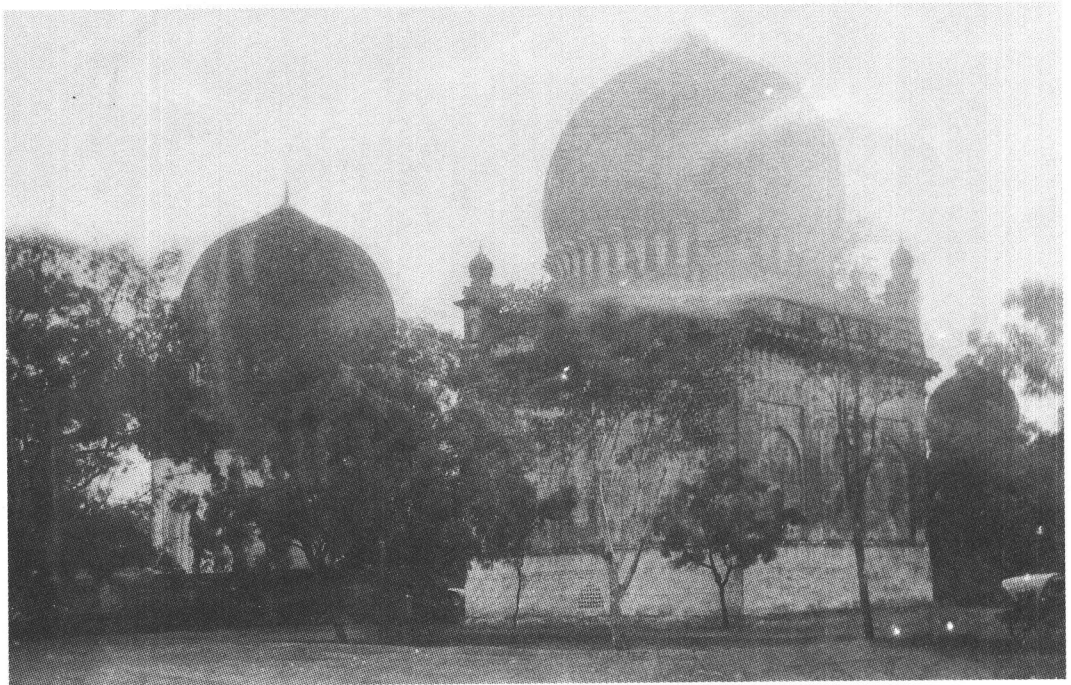
ANDA MASJID.



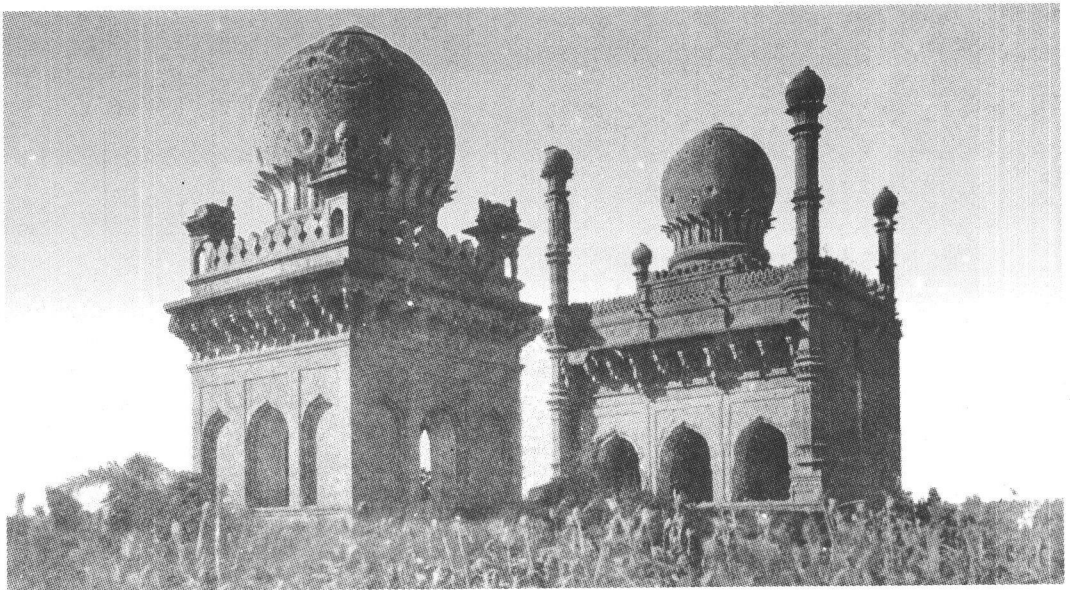
JALAMANDIR AND SATMANZIL.



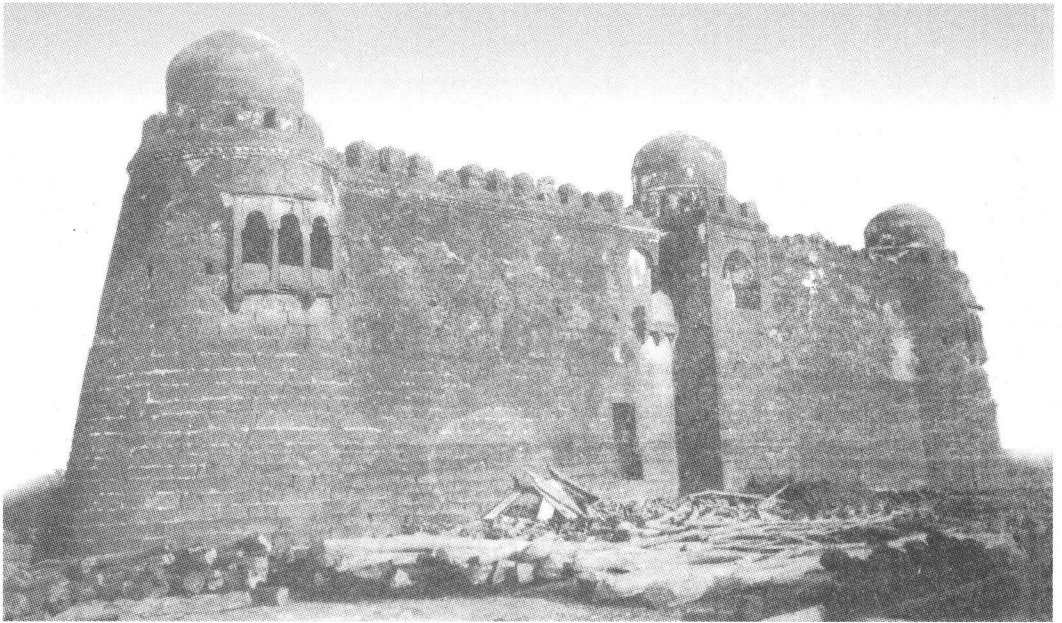
MIHTAR MAHAL (all in Bijapur)



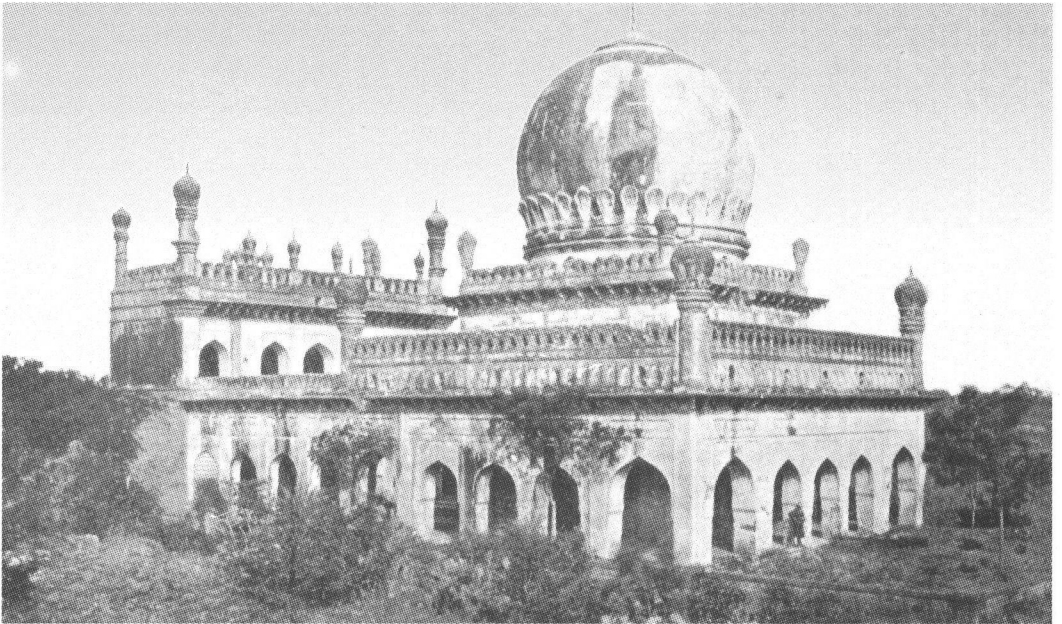
TOMBS OF MOHAMAD AND ABDUL RAZAQ QUADIR.



MASJID AT SHAHAPUR AREA.

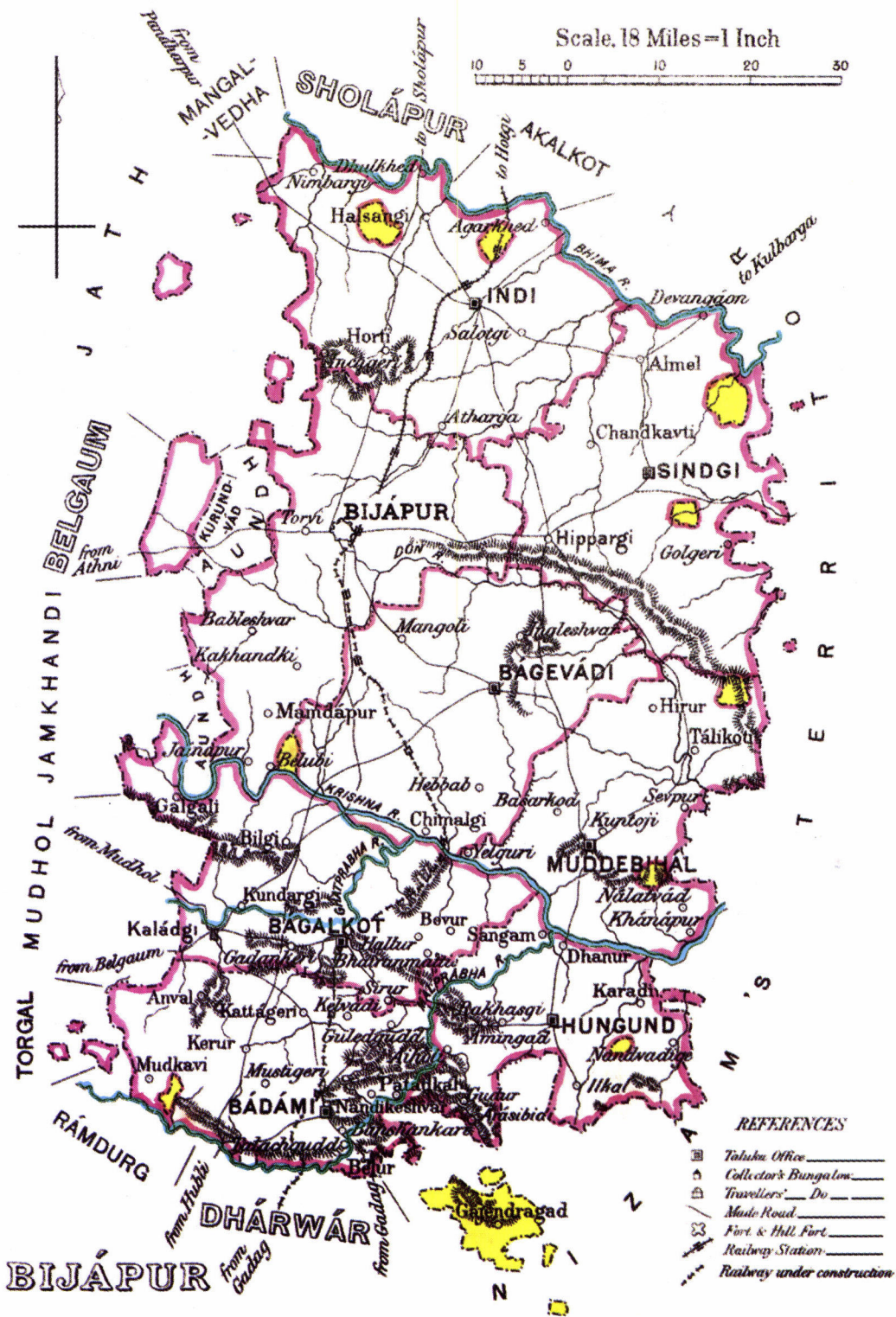
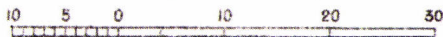


DEKKANI IDGAH.



TOMB OF AFZALKHAN (not burried)

Scale, 18 Miles = 1 Inch



REFERENCES

- Taluqa Office
- Collector's Bungalow
- Travellers' Do
- Mule Road
- Fort & Hill Fort
- Railway Station
- Railway under construction